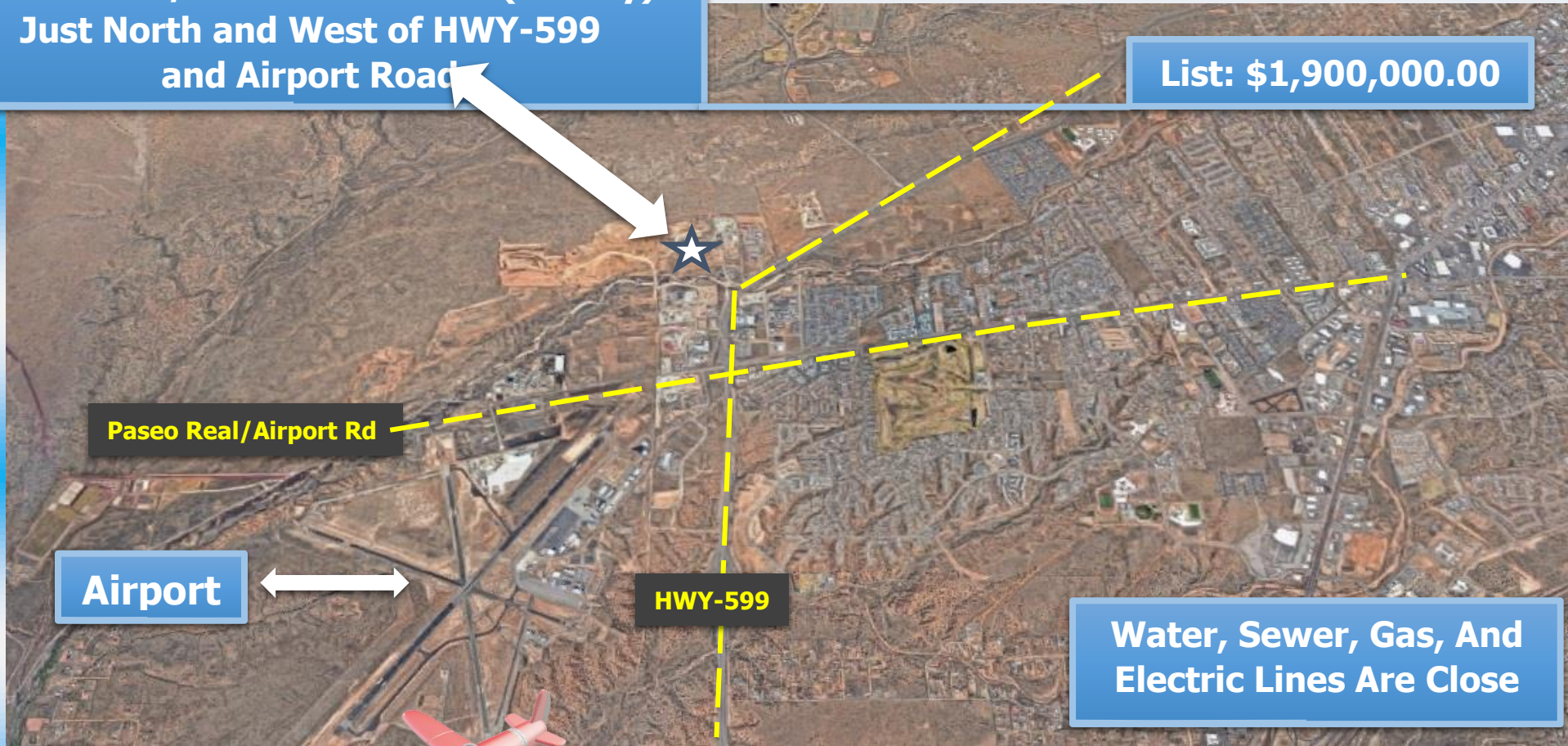


Santa Fe, New Mexico
27+- Acres / Zoned Industrial (County)
Just North and West of HWY-599
and Airport Road

List: \$1,900,000.00



Paseo Real / Airport Rd

Airport

HWY-599

**Water, Sewer, Gas, And
Electric Lines Are Close**



The Brokerage Realty ABQ., LLC
Commercial Real Estate Brokerage

C: 505-480-7524



www.Acre9.com

Jeremy Gonzales-Qualifying Broker

6152 Deergrass Circle NW Albuquerque, New Mexico 87120
Phone: 505-299-6983 Fax: 505-459-0969
SiteSelect@hotmail.com

THE INFORMATION CONTAINED HEREIN HAS BEEN OBTAINED FROM SOURCES DEEMED RELIABLE, THOUGH WE DO NOT DOUBT THE ACCURACY OF THE INFORMATION, IT IS NOT GUARANTEED. THIS INFORMATION IS SUBMITTED SUBJECT TO ERRORS, OMISSIONS, CHANGE(S) IN PRICE, TERMS, CONDITIONS, PRIOR SALES, OR WITHDRAWAL FROM THE MARKET WITHOUT NOTICE. BROKERS MAKE NO GUARANTEE OR WARRANTIES, EITHER EXPRESS OR IMPLIED AS TO THE COMPLETENESS OR ACCURACY OF THE INFORMATION CONTAINED HEREIN. IT IS THE RESPONSIBILITY OF THE READER TO INDEPENDENTLY CONFIRM THE ACCURACY AND COMPLETENESS OF THE INFORMATION CONTAINED HEREIN.

The Brokerage Realty ABQ., llc
Commercial Real Estate Brokerage

C: 505-480-7524  www.Acre9.com

Jeremy Gonzales-Qualifying Broker
6152 Deergrass Circle NW Albuquerque, New Mexico 87120
Phone: 505-299-6983 Fax: 505-459-0969
SiteSelect@hotmail.com



More Below



**General Location
Not A Survey**

HWY-599

**27+- Acres
Zoned
County Industrial**

Paseo Real/Airport Rd



Airport

**Sand, gravel, and asphalt
operations in this area**

**Waste Water
Treatment Facility**



The Brokerage Realty ABQ., LLC
Commercial Real Estate Brokerage

C: 505-480-7524  www.Acre9.com

Jeremy Gonzales-Qualifying Broker
6152 Deergrass Circle NW Albuquerque, New Mexico 87120
Phone: 505-299-6983 Fax: 505-459-0969
SiteSelect@hotmail.com

EXP. 9/30/2015

$\Delta 3'42'11''$
R: 700.00'
L: 45.24'
CH: 45.23'
N60°00'27"E

TRACT B1B
4.395 Ac.±
100' R/W ROAD
DEDICATION AND
PUBLIC UTILITY
EASEMENT, DEDICATED
BY THIS PLAT

40' R/W FOR HAUL
ROAD, SLO TO ENCO
RW 23633.
EXPIRATION 2024
N61°31'32"E

$\Delta 29'10'14''$
R: 800.00'
L: 407.30'
CH: 402.91'
N47°16'26"E

TRACT B1A
27.018 Ac.±

50' PRIVATE ACCESS &
PUBLIC UTILITY EASEMENT,
BY THIS PLAT

50' SANTA FE COUNTY
ACCESS EASEMENT, PLAT
576/06 HEREBY VACATED
BY THIS PLAT.

REJECTED
1/2" REBAR
LS 3516
N76°W 0.89'

REJECTED
ALUMINUM CAP
LS 3516
S75°E 0.5'

ZONE X
(S3027°08'W)
N3077°53'E
108.52'

REJECTED
ALUMINUM CAP
LS 3516, 561'E 0.84'

50' ROAD &
UTILITY
EASEMENT
PLAT 738/50

REL.
ALUM.
CAP
LS 3516
N47°W
0.47'

SANTA FE
RIVER
(N67°22'
W) N47°43'33"E

ZONE AE
S58°49'00"E

MATERIAL
BIN

ZONE X

SEC 3

SANTA FE
RIVER
SEC 2

1915

LOT 2
PLAT 482/28
N/F ESPANOLA MERC. REAL ESTATE, LLC
MO. INST. #1722309

PASEO DE RIV
50' ROAD &
UTILITY
EASEMENT
PLAT 344/48

LOT 1
N/F PARKER,
PAUL E & MARY JO
MO. INST. #1722309
PLAT 482/28

REBAR,
CAP
IRON AS
149/34

ICE SURVEY

47
20'
17
63'
9"W

0029

DIRT ROAD
74259 358

(N60°20'04"
W) N50°20'04"
174.31'
229.08'
(S29°08'
W) N76°W 0.89'
(S68°38'12"
E) 181.38'

(N67°22'
W) N47°43'33"E
99.04'
(S72°17'07"
E) 190.01'
(S68°33'42"
E) 588.33'42"E

(N67°22'
W) N47°43'33"E
169.98'

(S58°49'00"
E) 207.59'
(S58°49'00"
E) 241.84'

(S58°49'00"
E) 207.59'
(S58°49'00"
E) 241.84'

(S58°49'00"
E) 207.59'
(S58°49'00"
E) 241.84'

(S58°49'00"
E) 207.59'
(S58°49'00"
E) 241.84'

(S58°49'00"
E) 207.59'
(S58°49'00"
E) 241.84'

(S58°49'00"
E) 207.59'
(S58°49'00"
E) 241.84'

50' R/W ROAD
N61°31'32"E

50' R/W ROAD
N61°31'32"E

50' R/W ROAD
N61°31'32"E

50' R/W ROAD
N61°31'32"E

50' R/W ROAD
N61°31'32"E

50' R/W ROAD
N61°31'32"E

50' R/W ROAD
N61°31'32"E

50' R/W ROAD
N61°31'32"E

50' R/W ROAD
N61°31'32"E

50' R/W ROAD
N61°31'32"E

50' R/W ROAD
N61°31'32"E

50' R/W ROAD
N61°31'32"E

50' R/W ROAD
N61°31'32"E

50' R/W ROAD
N61°31'32"E

50' R/W ROAD
N61°31'32"E

50' R/W ROAD
N61°31'32"E

50' R/W ROAD
N61°31'32"E

50' R/W ROAD
N61°31'32"E

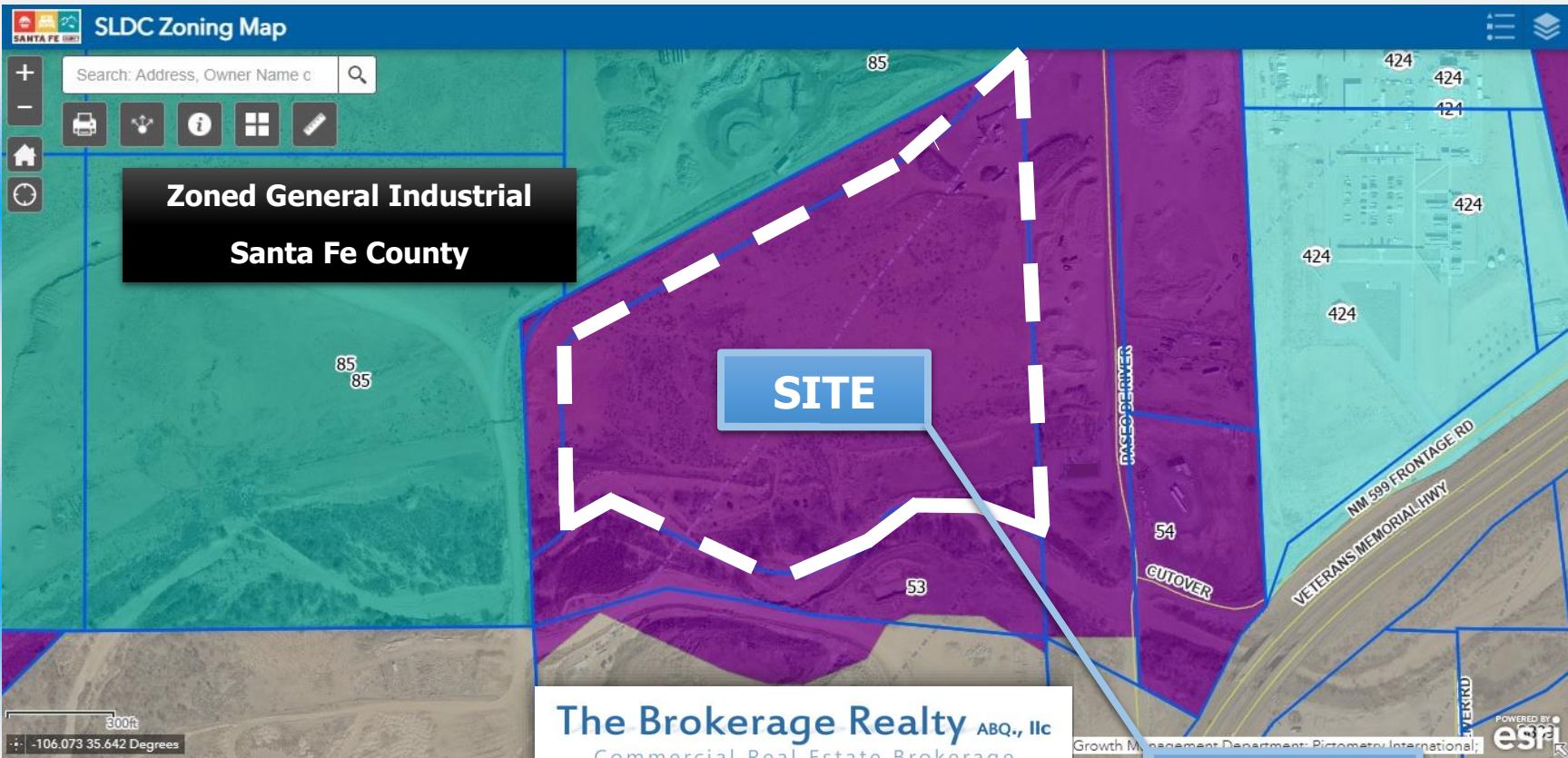
50' R/W ROAD
N61°31'32"E

50' R/W ROAD
N61°31'32"E

50' R/W ROAD
N61°31'32"E

50' R/W ROAD
N61°31'32"E

50' R/W ROAD
N61°31'32"E



The Brokerage Realty ABQ., llc
Commercial Real Estate Brokerage

C: 505-480-7524  www.Acre9.com

Jeremy Gonzales-Qualifying Broker
6152 Deergass Circle NW Albuquerque, New Mexico 87120
Phone: 505-299-6983 Fax: 505-459-0969
SiteSelect@hotmail.com

**NOT A
SURVEY**